

The Parish of Speldhurst with Groombridge & Ashurst



This Sunday's Services

10am Holy Communion (CW) at
St Mary's, Speldhurst

11am Matins at
St John's, Groombridge

8am Holy Communion
&
10.30am Morning Service at
All Saints, Langton Green
(Both services Giving Services
with Guest Speakers)

Additional Calendar Dates for St Mary's, Speldhurst

9am Friday 5th June Praise & Play
at St Mary's Church, Speldhurst.

9.30am Wednesday 10th June
Praise & Play at St Mary's Church,
Speldhurst.

Next Sunday's Services

10am Morning Worship at
St Mary's, Speldhurst

11am Holy Communion (BCP) at
St John's, Groombridge

8am Morning Service
&
10.30am Holy Communion at
All Saints, Langton Green



No Who Let the Dads Out this Saturday 6th June

WLDO will not be running this
Saturday. **Back in July.**

Langton Green Services this Sunday

Both the 8am and 10.30 services will be Giving
Services with guest speakers at both.



News & Diary Dates Across the Parish



Speldhurst Ashurst Groombridge Langton Green



Thriving Together

Helping Our Multi-Parish Benefice to Grow

Over the next year we will be using the CPAS Thrive resources to help us consider six areas:

1. Prayer
2. The stories of our churches.
3. Developing leaders.
4. Growing disciples.
5. Sharing faith.
6. Vision for the future.

Please pray for those involved who are leading this initiative



Speldhurst Fete is taking place on Saturday 20th June from 11am to 4.30pm, and as in previous years St Mary's will be serving teas and cakes at the event. This requires many pairs of hands to run smoothly; thankfully, the congregation of our church are always very generous with their time, energy and baking! If you are able to help out this year, whether for the first time or as a veteran of many years' experience, we'd love to hear from you. Helpers will be needed on the day to help set up, make and serve teas, clear tables and wash up (you would only be needed for a one-hour slot). We would also welcome any cakes that you are able to provide. If you can help in either way, please contact Susie Wesson by email to susannah_k@hotmail.com.



Thank you in advance!
Carolyn Firth, Nicky Rees and Susie Wesson

HELP NEEDED

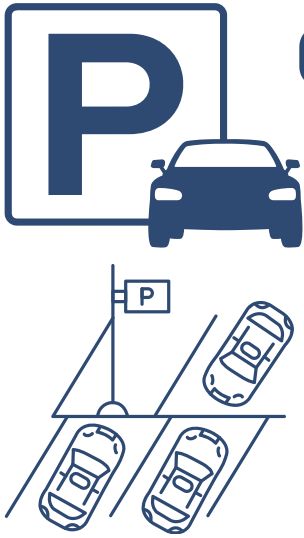
Kelly Kyte is looking for supplies for the upcoming KS1 Pyjama Party. She is looking for donations of kitchen roll tubes / foil / cling film tubes. If you can help please liaise with kelly
kelly.kyte@speldhurstchurch.org

Evensong

The next Parish Evensong will take place at St Mary's Church on the 28th June at 4pm



Additional Notices



George & Dragon Pub Car Park

As a village church we have benefited from the use of the G&D Pub Car Park on a Sunday morning for many years. The pub is venturing into weekend breakfast trade and as such have politely informed us that they need their car park back on a Sunday morning for pub trade. As a village church we of course want to be good Christian neighbours, so **we would respectfully ask that people refrain from using the pub car park for church use.** Breakfast trade will start from the Saturday 20th June. We would welcome everyone's support to maintain good friendly terms with the pub. We will have use of the school car park should people need it.

The theme is
Jesus The Good Shepherd and the
key scripture is John 10 v 14-16



1 2 7 7
make them count

**NATIONAL
MONTH
OF PRAYER
for
Toddler groups
June 2026**

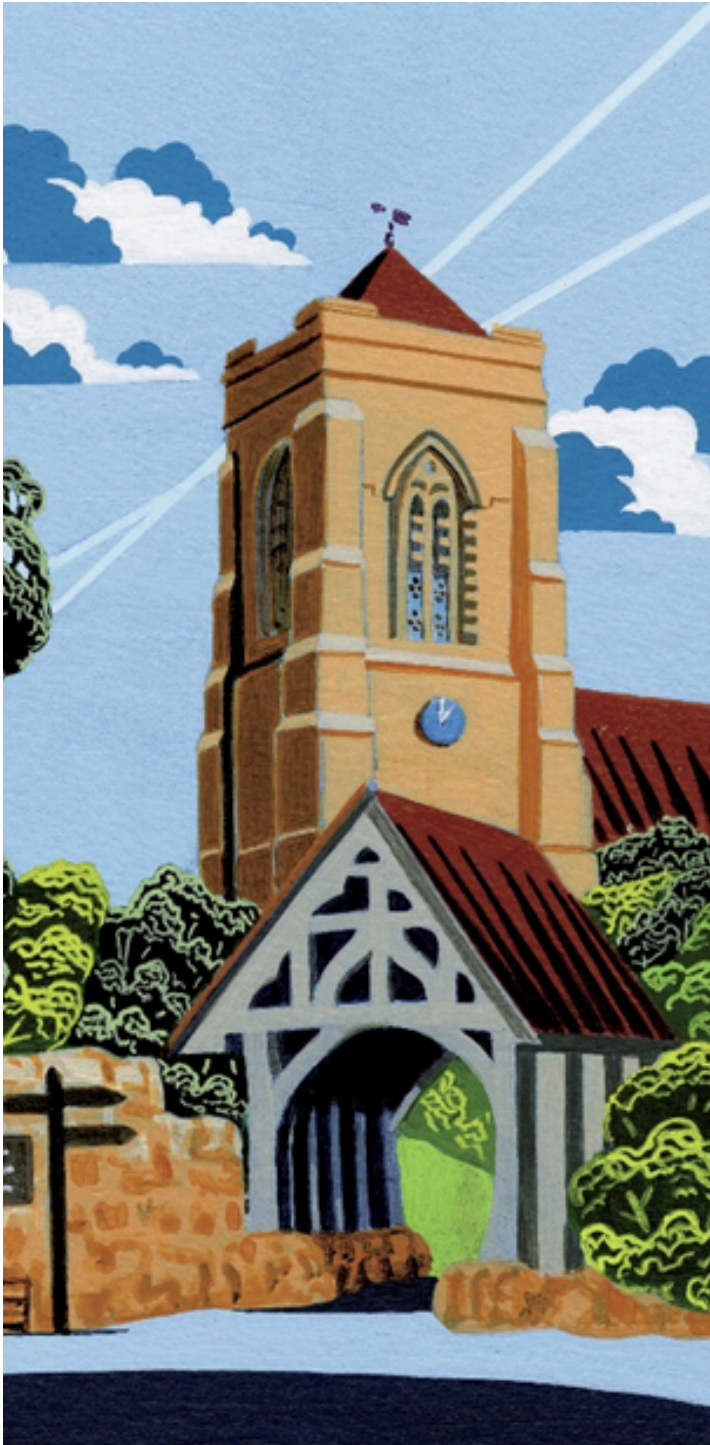
Pray for your local toddler group,
its leaders and all the families it
comes into contact with.

For more information, ideas and resources visit the Facebook Group - 1277
www.1277.org.uk/resources

Home Groups

Home Groups are small groups of people who meet on a regular basis – usually weekly- to build lasting friendships and help one another to grow in faith, especially through bible study. Groups meet for a couple of hours in the evening or during the day in people's homes and around the village. By joining a Home Group, you will be welcomed into a close circle of friends where burdens can be shared and joys celebrated. In addition to bible study and prayer, groups meet socially and sometimes come together to organise a church or wider community event. If you are interested in joining a group or would like to try one out for a while, please contact; revjohnp@outlook.com





SUNDAY 7TH JUNE
READINGS:

GENESIS 12: 1-9
&
MATHEW 9: 9-13, 18-26

Donate on a
Regular Basis

Regular donations are the lifeline that keeps our churches running. If you would like to donate on a regular basis then **St Mary's, Speldhurst** is set up with the **Parish Giving Scheme** that enables regular donations.

To find out more [click here](#)

[DONATE NOW](#)

Talk To Us

Priest in Charge: Revd Rob Hindmarch
The Church Office: Rachael Foster (Parish Administrator) 07960296027
admin@speldhurstchurch.org
Website: www.speldhurstchurch.org
Facebook: <https://www.facebook.com/StMarysSpeldhurst/>